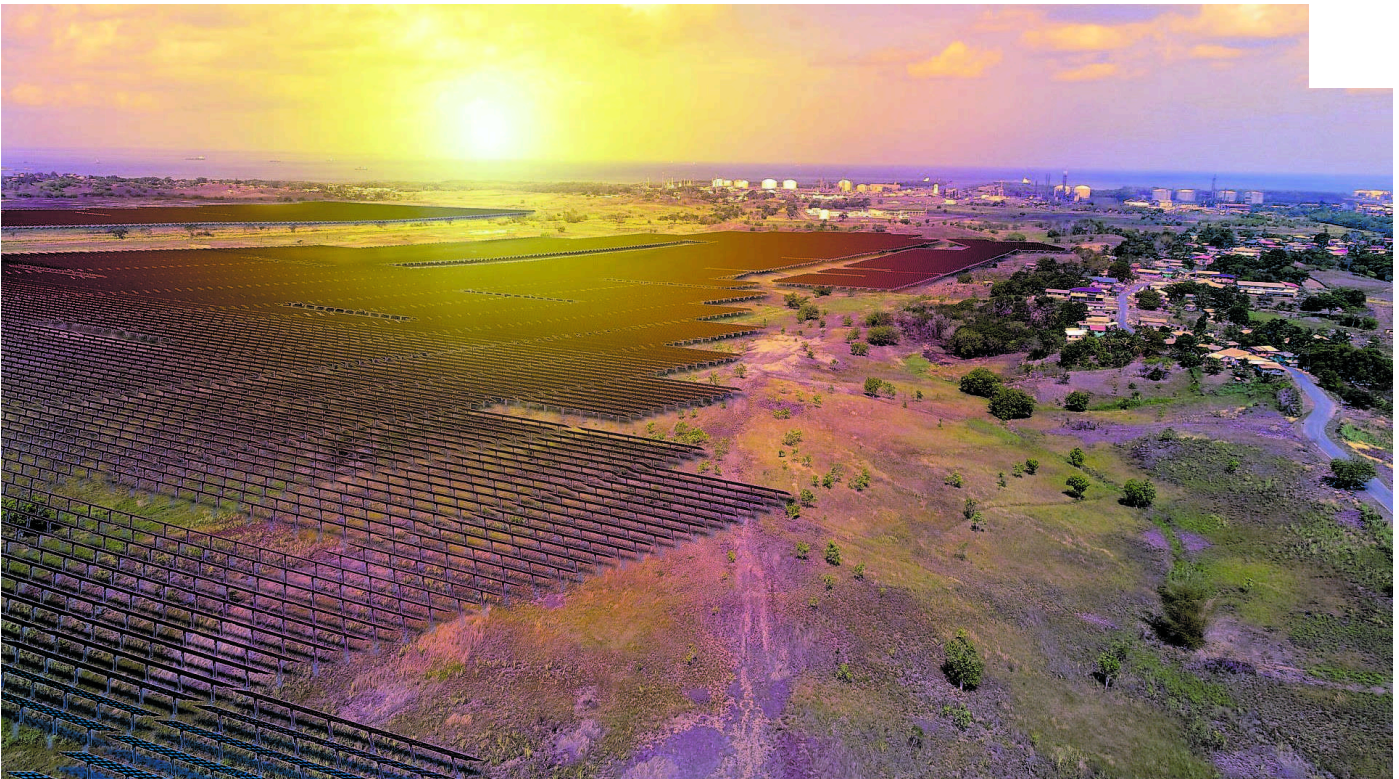


Contractor projects October start-up for Central solar farm



The solar farm at Brechin Castle which NGC Green is a shareholder in alongside BP and Shell.
PHOTO COURTESY BP

The Energy Chamber of T&T says the country is on the verge of a significant renewable energy achievement with the upcoming completion of the Brechin Castle solar farm, the largest solar project in the region expected to be in operation in five months time.

In a post on its website yesterday, the chamber said with one-third of the project already completed and the remaining work on track for completion by the end of 2025, the solar farm is expected to contribute approximately eight per cent of this country's total power-generation capacity.

The installed capacity of 92MW, projected to be operational by October this year, would provide clean energy equivalent to the needs of 31,500 homes.

The chamber said the project has prioritised local content, employing and training approximately 300 skilled and unskilled workers, many from nearby communities, adding that this focus on local engagement underscores the solar farm's role in fostering economic growth alongside renewable energy development.

Once operational, the chamber said the Brechin Castle solar farm would stand as the largest project in Grupotec's global portfolio, which spans Europe, the Americas, Africa and the Caribbean.

Beyond its energy contributions, the solar farm is projected to reduce CO2 emissions by 123,000 tonnes annually—equivalent to removing 26,000 cars from the road—marking a major step toward T&T's sustainability goals.

Construction manager, Grupotec—the engineering, procurement, and construction contractor leading the construction—Anant Ramkellawan highlighted several challenges encountered during the initial phases, including communication barriers, difficult terrain, flooding and labour-related issues. However, the chamber said these hurdles have yielded valuable learnings, reinforcing the project's role as a pioneering initiative in the country's energy transition.

“Environmental stewardship has been a priority throughout the project's execution. Compliance with the certificate of environmental clearance (CEC) ensured minimal disruption to local ecosystems. Measures such as relocating wildlife (including caimans, bees and otters), using sustainable construction techniques like piling and reinforcement with aggregate, and planting vetiver grass for land stabilisation demonstrate the project's commitment to environmental responsibility,” the chamber explained.

It added the project has achieved an impressive safety record of 350,000 incident-free work hours—a testament to the rigorous standards upheld by the construction team.

Located on 238 hectares of land northeast of Point Lisas, the solar farm is a joint venture between BCSL (Breachin Castle Solar Farm Ltd)—a partnership comprising BP Alternative Energy T&T, Shell and the National Gas Company.